

6

5

4

3

2

1

MATERIAL AND FINISH:

Insulator: Thermoplastic, UL-94V-0 rated, color white

Contacts: Brass, Nickel Plated

**RoHS
COMPLIANT**

ELECTRICAL SPECIFICATIONS:

Rated current: 10A

Rated voltage: 250VAC

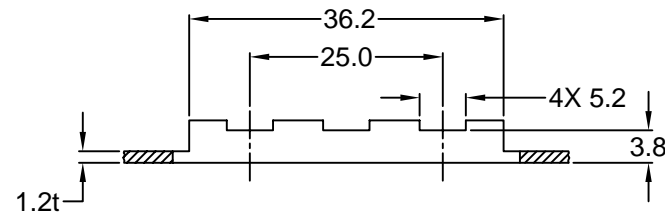
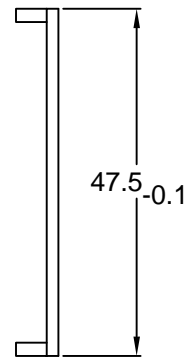
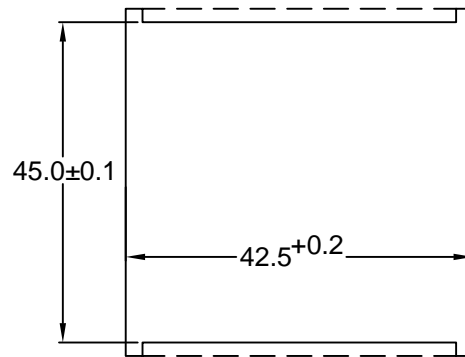
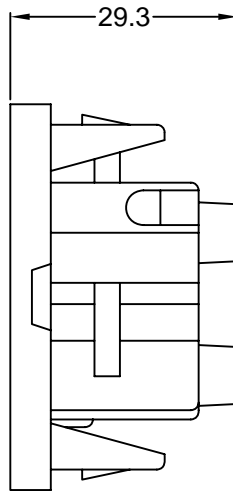
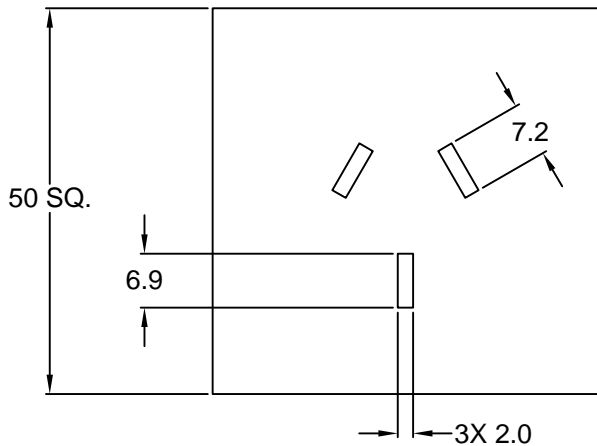
Insulation resistance: 100 Mohm min. at 500VDC

Dielectric withstanding voltage: 2000VAC for one minute

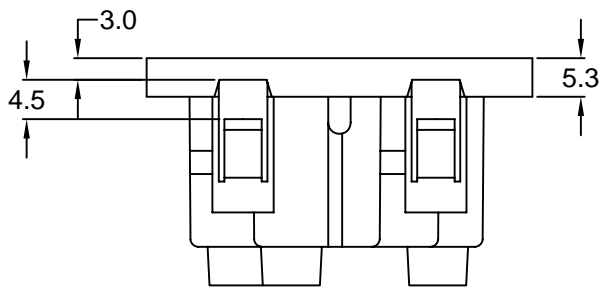
APPROVAL:



NSW OFFICE
OF
FAIR TRADING
AUSTRALIA



**RECOMMENDED
PANEL CUTOUT**



REVISIONS	CHNG	CHECK	APPR
	CHANGE	UPDATED	PB
	DATE	8/3/10	
	REV	A	

TOLERANCE UNLESS OTHERWISE SPECIFIED		
X ± 1		
X.X ± 0.4		
X.XX ± 0.20		
DRAWN BY	GQ	DATE: 11/06/01
CHECK BY	TD	DATE: 11/13/01
APPR BY	PB	DATE: 11/13/01

Power Dynamics, Inc.		
Phone: 973 560-0019 Whippany, New Jersey Fax: 973 560-0076		
PART: AS 3112 ATRALIAN/NEW ZEALAND SQUARE RECEPTACLE		
PART #: PD-16AU		SHEET 1 of 1
SIZE: A	ALL DIMENSIONS FOR REFERENCE ONLY DIMENSIONS ARE IN MILLIMETERS	REV: A
SCALE: NTS		